



SOLITAIRE CHESS[®]

Mind-Capturing Logic Game



Instructions, Hints
& Solutions



Ignite Your Mind![®]

AGES
8 to adult
single player

Solitaire Chess®

Welcome to Solitaire Chess, the single-player logic game that uses the rules of chess in simplified form to create a diabolical brainteaser challenge!

If you've never played chess before, no problem – Solitaire Chess is an inviting way to hone your skills and build your chess-playing strategies. If you are a chess expert, good luck to you! We think the upper levels of Solitaire Chess will be worthy of your abilities. For everyone who enjoys a good puzzle challenge... Solitaire Chess is for you!

1 Plastic Chess Board
(w/ Storage drawer)



Drop lock into slot
to secure cards

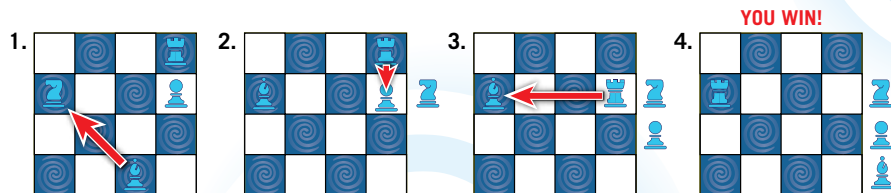
30 Double-Sided
Challenge Mats
(60 Challenges)

10 Chess Pieces
(1 King, 1 Queen, 2 Knights, 2 Bishops, 2 Rooks, 2 Pawns)

Instruction Booklet
Including Hints & Solutions

Your Goal:

Capture the chess pieces until only one piece remains on the board.



Setup:

1. Choose a challenge mat and place it on the game tray (to slide pieces), or as the top challenge in the storage slot (for a more secure placement).
2. Place chess pieces on the challenge mat as indicated.

Steps To Play:

1. Move the chess pieces according to the movement rules (pages 6-7)*
Each move MUST result in a captured piece. Think ahead and plan your moves!
2. If you are left with two or more pieces on the board, reset the challenge and try again.
3. When there is only one piece left on the board, YOU WIN!

*Movements are the same as in standard chess.

Comparing Solitaire Chess® to Standard Chess:

Solitaire Chess is a single-player logic puzzle, not a chess game. Recreational mathematicians classify it as a “chess task,” meaning that it uses the rules of chess with appropriate adaptations.

With Solitaire Chess, the basic piece movements are the same as with standard chess. When you evaluate each challenge and plan your strategy, you are thinking the same way you do when you are playing chess. However, chess purists will notice differences between the two games.

The differences are:

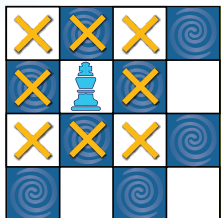
- Solitaire Chess is a single-player game; all the pieces are the same color.
- Every move you make must result in a capture.
- Pawns can be placed anywhere on the board. They may only move up the board by diagonally capturing another piece.
- Pawns are not promoted when they reach the top rank (top row).
- There is no “check” rule for the King.
- By our design, every challenge that uses a King will end with the King as the last remaining piece. (This is not a rule; it is a hint for you.)

Strategies to Try if You Get Stuck:

Solitaire Chess® can be challenging! But as you play, you will get the hang of it and you’ll be amazed at how quickly your skills improve. When playing, here are some solving strategies that might help you.

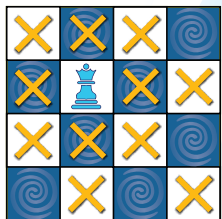
- Look for a piece that cannot capture. You can then work backwards, because at some point during the challenge, this piece will need to be captured.
- Look for a capture “sweep,” where all other pieces are captured by one piece. For example, all the pieces might be captured by the Queen.
- When the King is included in a challenge, you immediately know it will be the last piece on the board...because we have designed the challenges to work this way.
- If you are an experienced chess player, look for “unnatural” moves, such as capturing the Queen first.
- Examine the Knight very carefully. It is one of the hardest pieces to analyze because of its L-shaped movement.
- Examine all the possible captures on the board, systematically and completely. Make sure you don’t miss any possibilities...every challenge does have a solution!
- Use our hint system (pages 9-12) to give yourself a boost.

Movement Rules: See challenge icon key on page 8.

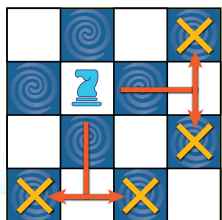


King captures after moving exactly one square horizontally, vertically or diagonally.

The challenges are designed such that in the solution the King will never be captured.

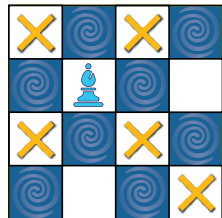


Queen captures after moving across any number of vacant squares horizontally, vertically, or diagonally.



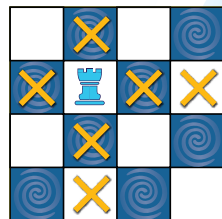
Knights capture after moving in an “L” (or inverted “L”) with two steps in one direction, a 90° turn and one step in the new direction.

Knights are the only pieces that can jump over other pieces. They capture only the piece that occupied the final square.

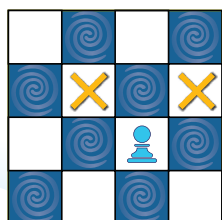


Bishops capture after moving across any number of vacant squares diagonally.

Bishops always remain on their original square color.



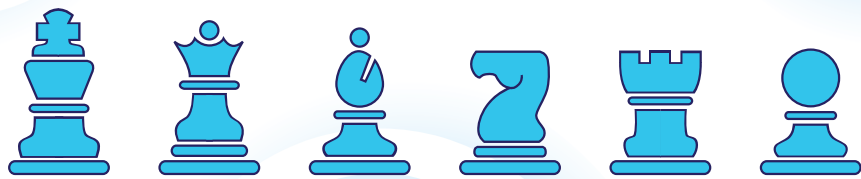
Rooks capture after moving across any number of vacant squares vertically or horizontally.



Pawns capture after moving diagonally up one space. Pawns can only move upward.

Unlike regular chess, pawns are NOT promoted when they reach the top row.

Solitaire Chess® Challenge Icons & Pieces:



King

Queen

Bishop

Knight

Rook

Pawn

About the Inventor:

Solitaire Chess was invented by Vesa Timonen, a software engineer living in Finland. His interests include puzzles, magic, programming and wood-working. This is Vesa's second ThinkFun product; the first being the Aha Brainteaser, Rec-Tangle.

Solitaire Chess® Hints:

Solitaire Chess is a hard puzzle for many reasons. To be successful you often have to play through the whole sequence in your mind before you start moving the pieces.

For those times when you think you are really stuck, we provide a hint system to give you a boost. On the following pages, for each challenge we provide three types of hints:

- The first piece to move – page 10
- The first piece to be captured – page 11
- The last piece remaining on the board – page 12

Also, you'll notice we have interspersed the order of the hints, so hints in the same level of play are not next to each other. This design is intentional, so you don't accidentally glance at a hint for your next challenge before you are ready for it.

Our Philosophy:

Play each challenge through, then come back in a few days and play it again... and again. Solitaire Chess is not only great fun; it's great brain exercise. You'll be surprised at what you've remembered and forgotten each time you play.

Hint – First Piece to Move:

Beginner 1: Pawn
Intermediate 16: Rook
Advanced 31: Rook
Expert 46: Knight

Beginner 2: Knight
Intermediate 17: Bishop
Advanced 32: Bishop
Expert 47: Pawn

Beginner 3: Rook
Intermediate 18: Rook
Advanced 33: Pawn
Expert 48: Pawn

Beginner 4: Pawn
Intermediate 19: Pawn
Advanced 34: Rook
Expert 49: Pawn

Beginner 5: King
Intermediate 20: Rook
Advanced 35: Knight
Expert 50: Bishop

Beginner 6: Knight
Intermediate 21: Knight
Advanced 36: Bishop
Expert 51: Rook

Beginner 7: Queen
Intermediate 22: Knight
Advanced 37: Bishop
Expert 52: Rook

Beginner 8: Knight
Intermediate 23: Rook
Advanced 38: Bishop
Expert 53: Rook

Beginner 9: Queen
Intermediate 24: Knight
Advanced 39: Knight
Expert 54: Knight

Beginner 10: Knight
Intermediate 25: Knight
Advanced 40: Bishop
Expert 55: Pawn

Beginner 11: Rook
Intermediate 26: Bishop
Advanced 41: Pawn
Expert 56: Knight

Beginner 12: Queen
Intermediate 27: Knight
Advanced 42: Rook
Expert 57: Bishop

Beginner 13: King
Intermediate 28: Rook
Advanced 43: Bishop
Expert 58: Knight

Beginner 14: Rook
Intermediate 29: Bishop
Advanced 44: King
Expert 59: Knight

Beginner 15: Bishop
Intermediate 30: Rook
Advanced 45: Knight
Expert 60: Knight

Hint – First Piece to Be Captured:

Beginner 1: Bishop
Intermediate 16: Queen
Advanced 31: Pawn
Expert 46: Rook

Beginner 2: Rook
Intermediate 17: Rook
Advanced 32: Knight
Expert 47: Rook

Beginner 3: Pawn
Intermediate 18: Bishop
Advanced 33: Bishop
Expert 48: Rook

Beginner 4: Rook
Intermediate 19: Bishop
Advanced 34: Rook
Expert 49: Bishop

Beginner 5: Bishop
Intermediate 20: Bishop
Advanced 35: Pawn
Expert 50: Knight

Beginner 6: Rook
Intermediate 21: Bishop
Advanced 36: Rook
Expert 51: Bishop

Beginner 7: Rook
Intermediate 22: Rook
Advanced 37: Pawn
Expert 52: Bishop

Beginner 8: Queen
Intermediate 23: Queen
Advanced 38: Queen
Expert 53: Pawn

Beginner 9: Pawn
Intermediate 24: Rook
Advanced 39: Bishop
Expert 54: Knight

Beginner 10: Queen
Intermediate 25: Pawn
Advanced 40: Queen
Expert 55: Knight

Beginner 11: Rook
Intermediate 26: Knight
Advanced 41: Bishop
Expert 56: Pawn

Beginner 12: Bishop
Intermediate 27: Queen
Advanced 42: Pawn
Expert 57: Pawn

Beginner 13: Bishop
Intermediate 28: Knight
Advanced 43: Knight
Expert 58: Bishop

Beginner 14: Queen
Intermediate 29: Rook
Advanced 44: Bishop
Expert 59: Bishop

Beginner 15: Pawn
Intermediate 30: Knight
Advanced 45: Bishop
Expert 60: Rook

Hint – Last Piece on the Board:

Beginner 1: Pawn
 Intermediate 16: Knight
 Advanced 31: King
 Expert 46: Rook

Beginner 2: Knight
 Intermediate 17: Queen
 Advanced 32: Rook
 Expert 47: Rook

Beginner 3: Rook
 Intermediate 18: Queen
 Advanced 33: Knight
 Expert 48: Rook

Beginner 4: Rook
 Intermediate 19: Knight
 Advanced 34: Knight
 Expert 49: Pawn

Beginner 5: King
 Intermediate 20: Rook
 Advanced 35: Queen
 Expert 50: Rook

Beginner 6: King
 Intermediate 21: Queen
 Advanced 36: Knight
 Expert 51: Rook

Beginner 7: Queen
 Intermediate 22: Queen
 Advanced 37: Rook
 Expert 52: King

Beginner 8: Rook
 Intermediate 23: Bishop
 Advanced 38: Rook
 Expert 53: Rook

Beginner 9: Knight
 Intermediate 24: Queen
 Advanced 39: Rook
 Expert 54: Bishop

Beginner 10: Bishop
 Intermediate 25: Knight
 Advanced 40: Rook
 Expert 55: Bishop

Beginner 11: Knight
 Intermediate 26: Knight
 Advanced 41: Knight
 Expert 56: Rook

Beginner 12: Queen
 Intermediate 27: Bishop
 Advanced 42: Rook
 Expert 57: Rook

Beginner 13: King
 Intermediate 28: Bishop
 Advanced 43: Pawn
 Expert 58: Rook

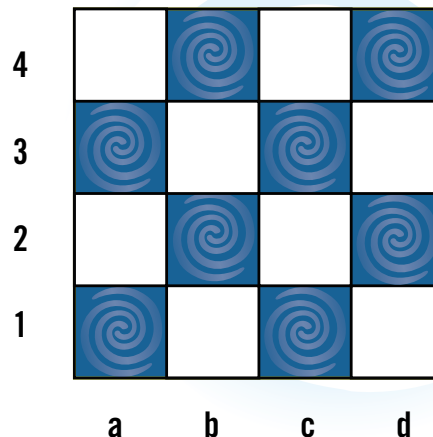
Beginner 14: Bishop
 Intermediate 29: Knight
 Advanced 44: King
 Expert 59: Pawn

Beginner 15: Rook
 Intermediate 30: Knight
 Advanced 45: Bishop
 Expert 60: Pawn

Solutions to the Challenges:

Our solution descriptions refer to the chess board positions, not the game pieces. As you read the individual solution paths* on the following pages, refer to the reference positions on the chess board below.

Chess Board Rank and File (Rows and Columns):



***A Note About Solutions:** Sometimes the order in which you capture the pieces may differ slightly from the order we present in our solutions. This difference is entirely reasonable. However, for every challenge, regardless of the order of the solution sequence, the identity of the final piece and its position are always unique.

Solutions:

Beginner 1:

a2 → b3
b3 → a4

Beginner 2:

b4 → a2
a2 → c3

Beginner 3:

d4 → d1
d1 → a1
a1 → a3
a3 → c3

Beginner 4:

a2 → b3
b2 → b3
b3 → c3

Beginner 5:

b1 → a2
a2 → b2
b2 → c3

Beginner 6:

a1 → b3
a2 → b3
b3 → c3

Beginner 7:

c2 → a2
a2 → b1
b1 → b4

Beginner 8:

b2 → c4
a4 → c4
c4 → c1

Beginner 9:

c4 → c3
a2 → c3
c3 → b1

Beginner 10:

c3 → a2
b1 → a2
a2 → c4

Beginner 11:

d4 → a4
b2 → a4
a4 → c3

Beginner 12:

b3 → c4
c4 → a2
a2 → d2

Beginner 13:

b3 → a2
b4 → b2
a2 → b2
b2 → c1

Beginner 14:

d3 → c3
a1 → c3
c3 → b4

Beginner 15:

b3 → a2
c2 → a2
a2 → a1

Inter. 16:

b4 → b3
c2 → a1
a1 → b3
b3 → d2

Inter. 17:

a4 → b3
a2 → b1
b1 → b3
b3 → c3

Inter. 18:

a2 → a1
a3 → c1
c1 → a1
a1 → d4

Inter. 19:

b1 → a2
a2 → b3
d4 → b3
b3 → a1

Inter. 20:

a3 → b3
b3 → b2
b2 → b4
b4 → c4

Inter. 21:

b1 → c3
a3 → a1
a1 → c3
c3 → c4

Inter. 22:

a4 → c2
b3 → a4
a4 → c2
c2 → d2

Inter. 23:

a3 → c3
a4 → c3
a1 → c3
c3 → d2

Inter. 24:

c2 → a1
a1 → b3
b2 → b3
b3 → d3

Inter. 25:

b2 → c4
a2 → d2
c4 → d2
d2 → b1

Inter. 26:

a3 → c1
c2 → c1
a2 → c1
c1 → b3

Inter. 27:

c4 → b2
d2 → b2
a3 → b2
b2 → a1

Inter. 28:

a4 → b4
b4 → b1
a2 → b1
b1 → d3

Inter. 29:

d4 → b2
b2 → c1
d3 → c1
c1 → a2

Inter. 30:

a1 → a4
d3 → b2
b2 → a4
a4 → c3

Advanced 31:

c1 → c2
b3 → c2
a3 → c3
c2 → c3
c3 → d4

Advanced 32:

a3 → b4
b4 → c3
c3 → a1
a2 → a1
a1 → d1

Advanced 33:

a1 → b2
b2 → a3
b4 → a3
c2 → a3
a3 → b1

Advanced 34:

a1 → a2
d1 → b3
b3 → a2
c1 → a2
a2 → b4

Advanced 35:

b2 → d3
d3 → b4
b4 → a2
c4 → a2
a2 → a1

Advanced 36:

c3 → a1
d3 → c2
b4 → c2
c2 → a1
a1 → b3

Advanced 37:

b2 → c1
d2 → c1
c3 → c1
c1 → c4
c4 → a4

Advanced 38:

d3 → c2
b3 → d4
d4 → c2
c1 → c2
c2 → a2

Advanced 39:

c1 → a2
d4 → b2
b1 → b2
b2 → a2
a2 → a3

Advanced 40:

a2 → b3
d1 → c2
c2 → b3
d3 → b3
b3 → b4

Advanced 41:

d3 → c4
b2 → c4
c1 → a3
c4 → a3
a3 → b1

Advanced 42:

d2 → d4
b2 → d4
d4 → a1
a3 → a1
a1 → c1

Advanced 43:

b1 → d3
c3 → d3
d3 → a3
b2 → a3
a3 → b4

Advanced 44:

a2 → b1
d1 → a4
a3 → a4
a4 → a1
b1 → a1
a1 → b2
b2 → c3

Advanced 45:

b4 → a2
a2 → c1
c4 → c1
d2 → c1
c1 → a3

Expert 46:

b4 → a2
b2 → a2
d4 → a1
a2 → a1
a1 → c1

Expert 47:

a1 → b2
c3 → b1
b1 → d2
c2 → b2
b2 → d2
d2 → d4

Expert 48:

d3 → c4
b3 → c4
c4 → a2
b4 → b2
b2 → a2
a2 → a1

Expert 49:

c1 → b2
d4 → c2
a1 → a2
a2 → b2
b2 → c2
b1 → c2
c2 → d3

Expert 50:

b2 → c1
c1 → a3
a3 → b4
b3 → b1
b1 → b4
b4 → d4

Expert 51:

b2 → b3
b3 → c3
c3 → c4
c4 → b4
b4 → b1
b1 → a1

Expert 52:

b2 → b1
a3 → c1
b1 → a1
a1 → c1
c1 → c3
b3 → c3
c3 → d4

Expert 53:

c3 → c4
c4 → d4
b2 → d4
d4 → a1
b3 → b1
b1 → a1
a1 → a2

Expert 54:

c1 → a2
c2 → b1
b2 → d2
d2 → a2
b1 → a2
a2 → c4

Expert 55:

a1 → b2
d4 → b2
c1 → c2
c2 → b2
b2 → b1
a2 → b1
b1 → d3

Expert 56:

d2 → b3
b1 → b3
b3 → d3
d3 → a3
a3 → a4
a4 → a1
a1 → c1

Expert 57:

c4 → d3
d3 → b1
d4 → b3
b3 → d2
d2 → b1
b4 → b1
b1 → a1

Expert 58:

a3 → b1
c2 → b2
b2 → b1
b1 → a1
a1 → a2
a2 → d2
d2 → d4

Expert 59:

c2 → a1
d1 → b3
a1 → b3
b3 → d2
c1 → d2
d2 → c3
c3 → b4

Expert 60:

a3 → c4
b3 → c4
c4 → a2
c1 → a2
a2 → c3
b2 → c3
c3 → d4

ThinkFun's Mission is to Ignite Your Mind!®

ThinkFun® is the world's leader in addictively fun games that stretch and sharpen your mind. From lighting up young minds to creating fun for the whole family, ThinkFun's innovative games and mobile apps make you think while they make you smile.



www.ThinkFun.com

